

Product Sheet

Cynomolgus_αvβ6 HEK-293 Cell Line

Catalog number: GM-C28127

Version 3.3.1.250325

Description	Cynomolgus_αvβ6 HEK-293 Cell Line is a clonal stable HEK-293 cell line that constitutively expresses the cynomolgus ITGAV and cynomolgus ITGB6 genes, constructed using lentiviral technology.
Quantity	5E6 Cells per vial, 1 mL
Product Format	1 vial of frozen cells
Shipping	Shipped on dry ice
Storage Conditions	Liquid nitrogen immediately upon receipt
Target	Cynomolgus_ITGAV & Cynomolgus_ITGB6
Gene ID/Uniprot ID	A0A2K5WCD3 & A0A2K5TZ36
Host Cell	HEK-293
Recovery Medium	DMEM+10% FBS+1% P.S
Growth medium	DMEM+10% FBS+1% P.S+4 μg/mL Blasticidin+0.75 μg/mL Puromycin
Note	None
Freezing Medium	90% FBS+10% DMSO
Growth properties	Adherent
Growth Conditions	37°C, 5% CO ₂
Mycoplasma Testing	The cell line has been screened to confirm the absence of Mycoplasma species.
Safety considerations	Biosafety Level 2
Note	It is recommended to expand the cell culture and store a minimum of 10 vials at an early passage for potential future use.

Materials

Reagent	Manufacturer/Catalogue No.
DMEM	Gibco/C11995500BT
Fetal Bovine Serum	Cegrogen biotech/A0500-3010
Pen/Strep	Thermo/15140-122
Blasticidin	Genomeditech/ GM-040404
Puromycin	Genomeditech/ GM-040401
Anti- $\alpha\beta$ 6 hIgG1 Antibody(m15H3)	Genomeditech/ GM-53193AB
Anti-ITGB6 hIgG1 Antibody(SGN-B6A)	Genomeditech/ GM-81622AB
Anti- α v hIgG2 Antibody(Abituzumab)	Genomeditech/ GM-49298AB

Figures

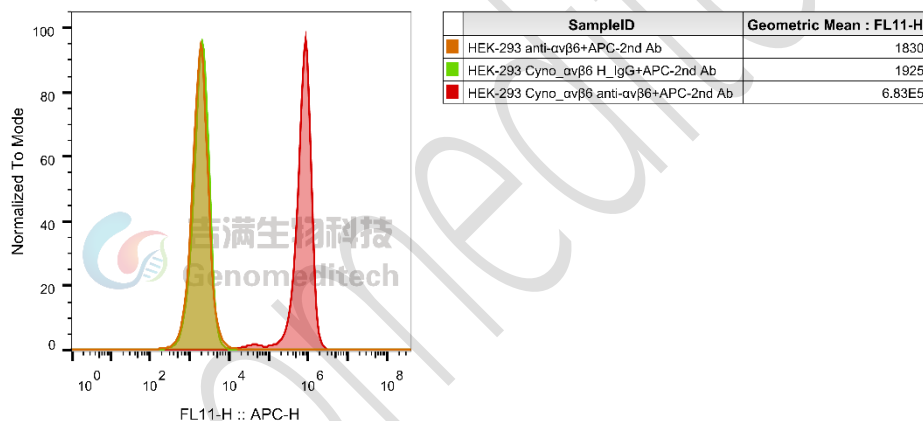


Figure 1 | Cynomolgus_ $\alpha\beta$ 6 HEK-293 Cell Line (Cat. GM-C28127) was determined by flow cytometry using Anti- $\alpha\beta$ 6 hIgG1 Antibody(m15H3) (Cat. [GM-53193AB](#)).

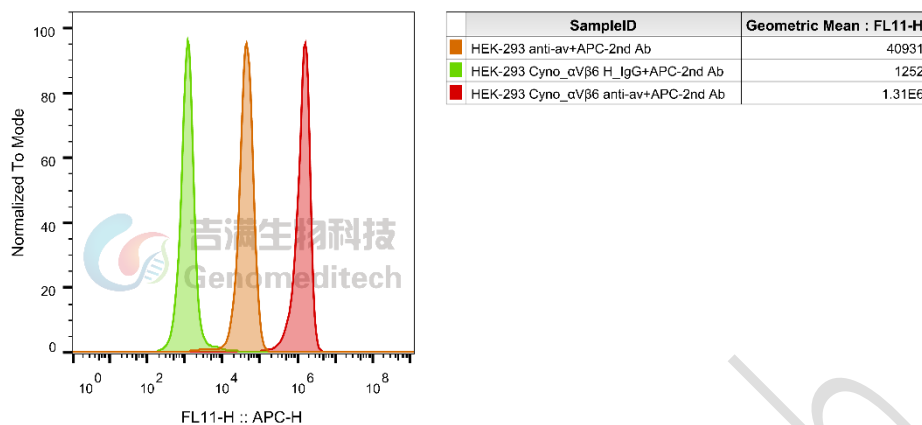


Figure 2 | Cynomolgus_αVβ6 HEK-293 Cell Line (Cat. GM-C28127) was determined by flow cytometry using Anti-αV(Abituzumab)hIgG2 Antibody (Cat. [GM-49298AB](#)).

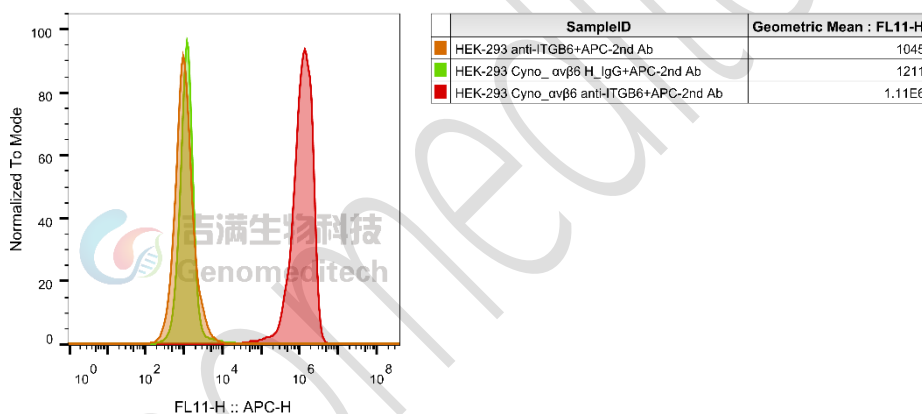


Figure 3 | Cynomolgus_αVβ6 HEK-293 Cell Line (Cat. GM-C28127) was determined by flow cytometry using Anti-ITGB6 hIgG1 Antibody(SGN-B6A) (Cat. [GM-81622AB](#)).

Cell Recovery

Recovery Medium: DMEM+10% FBS+1% P.S

To insure the highest level of viability, thaw the vial and initiate the culture as soon as possible upon receipt. If upon arrival, continued storage of the frozen culture is necessary, it should be stored in liquid nitrogen vapor phase and not at -70°C. Storage at -70°C will result in loss of viability.

- Thaw the vial by gentle agitation in a 37°C water bath. To reduce the possibility of contamination, keep the O-ring and cap out of the water. Thawing should be rapid (approximately 2 - 3 minutes).
- Remove the vial from the water bath as soon as the contents are thawed, and decontaminate by dipping in or spraying with 70% ethanol. All of the operations from this point on should be carried out under strict aseptic conditions.

- c) Transfer the vial contents to a centrifuge tube containing 5.0 mL complete culture medium and spin at approximately 176 x g for 5 minutes. Discard supernatant.
- d) Resuspend cell pellet with the recommended recovery medium. And dispense into appropriate culture dishes.
- e) Incubate the culture at 37°C in a suitable incubator. A 5% CO₂ in air atmosphere is recommended if using the medium described on this product sheet.

Cell Freezing

Freezing Medium: 90% FBS+10% DMSO

- a) Centrifuge at 176 x g for 3 minutes to collect cells.
- b) Resuspend the cells in pre-cooled freezing medium and adjust the cell density to 5E6 cells/mL.
- c) Aliquot 1 mL into each vial.
- d) Place the vial in a controlled-rate freezing container and store at -80°C for at least 1 day, then transfer to liquid nitrogen as soon as possible.

Cell passage

Growth medium: DMEM+10% FBS+1% P.S+4 µg/mL Blasticidin+0.75 µg/mL Puromycin

For the first 1 to 2 passages post-resuscitation, use the recovery medium. Once the cells have stabilized, switch to a growth medium.

- a) Subculturing is necessary when the cell density reaches 80%. It is recommended to perform subculturing at a ratio of 1:3 to 1:4 every 2-3 days. Ensure that the density does not exceed 80%, as overcrowding can lead to reduced viability due to compression.
- b) Remove and discard culture medium.
- c) Briefly rinse the cell layer with PBS to remove all traces of serum that contains trypsin inhibitor.
- d) Add 1.0 mL of 0.25% (w/v) Trypsin-EDTA solution to dish and observe cells under an inverted microscope until cell layer is dispersed (usually within 30 to 60 seconds at 37°C).
- e) Note: To avoid clumping do not agitate the cells by hitting or shaking the flask while waiting for the cells to detach. Cells that are difficult to detach may be placed at 37°C to facilitate dispersal.
- f) Add 2.0 mL of growth medium to mix well and aspirate cells by gently pipetting.
- g) After centrifugation, resuspend the pellet and add appropriate aliquots of the cell suspension to new culture vessels.
- h) Incubate cultures at 37°C.

Subcultivation Ratio: A subcultivation ratio of 1:3 - 1:4 is recommended

Medium Renewal: Every 2 to 3 days

Notes

- a) Upon initial thawing, a higher number of dead cells is observed, which is a normal phenomenon. Significant improvement is seen after adaptation. Once the cells reach a stable state, the number of dead cells decreases after subculturing and the cell growth rate becomes stable.
- b) Ensure that the cell density does not exceed 80%, as overcrowding may lead to reduced viability due to compression.

Sequence

ITGAV [A0A2K5WCD3](#)

MASPPRRRLRLGPRGLPLLLSGLLLPLCRAFNLVDSPA EYSGPEGSYFGFAVDFFVPSASSRMFLLVGAPKA
NTTQPGIVEGGQVLKCDWSSSTRRCQPIEFDATGNRDYAKDDPLEFKSHQWFGASVRSKQDKILACAPLYHW
RTELKQEREPVGTCTFLQDGTKTVEYAPCRSQDIDADGQGFCQGGFSIDFTKADRVLLGGPGSFYWQGGQLISD
QVAEIVSKYDPNVYSIKYNNQLATRTAQAIFFDDSYLGYSVAVGDFNGDGIDDFVSGVPRAARTLGMVYIYDG
KNMSSIYNFTGDQMAAYFGFSVAATDINGDDYADVFIGAPLFMDRGS DGLQE VGVSVSLQRASGDFQTT
KLNGFEVFARFGSAIAPLGDLDQDGFNDIAIAAPYGGEDKKGIVYIFNGRSTGLNAVPSQILEGQWAARSMPP
SFGYSMKGATDIDKNGYPDLIVGAFGVDRAILYRARPVITVNAGLEVYPSILNQDNKTCSLPGTALKVSCFNV
RFCLKADGKGVLPRKLNQVELLLDKLKQKGAIRRALFLYSRSPSHSKNMTISRGGMLMQCEELIAYLRDESEF
RDKLTPITIFMEYWLDYRTAADTTGLQPILNQFTPANISRQAHILLDCGEDNVCKPKLEVFVSDSQKKIYIGDD
NPLTLIVKAQNQGEGAYEALIVSIPLQADFIGVVRNSEALARLSCAFKTENQTRQVVC DLGNPMKAGTQLL
AGLRFVHQQSEMDTSVKFDLQIQSSNLFDKVSPV VSHKVDLAVLAAVEIRGVSSPDHIFLPINWEHKENPE
TEEDVGPVVQHIYELRNNGPSSFSKAMLHLQWPYKYNNNTLLYILHYDIDGPMNCTSDMEINPLRIKISSLQA
TEKNDTVAGQGERDHLITKRDLALSEGDIHTLGCQVAQCLKIVCQVGR LDRGKSAILYVKSLLWTETFMNKE
NQNHSSYLSKSSASFNVIEFPYKNLPIEDITNSTLVTNTVTWGIQAPMPVPVWVILAVLAGLLLLAVLVFVMY
RMGFFKRV RPPQEEQEREQLQPHENGEGNSET*

ITGB6 [A0A2K5TZ36](#)

MGIELLCLFFLFLGRNDHVQGGCALGGAETCEDCLLIGPQCAWCAQENFTRPSGVGERCDTPANLLAKGCQL
NFIENPVSQVEILKNKPLSVGRQKNSSDIVQIAPQSLILKLRPGGAQTLQVHVRQTEDYPVDLYYLMDSLASM
DDDLNTIKELGSRLSKEMSKLTSNFRLLGFGSFVEKPVSPFVKTTPEEIANPCSSIPYFCLPTFGFKHILPLTND AE
RFNEIVKNQKISANIDTPEGGFDAIMQAAVCKEKIGWRNDSLHLLVFVSDADSHFGMDSKLAGIVIPNDGLCH
LDSKNEYSMSTVLEYP TIGQLIDKL VQNNVLLIFAVTQEQVHLYENYAKLIPGATVGLLQKDSGNILQLIISAY
EELRSEVELEVLGDTEGLNLSFTAICNNGTFFQHQQKCSHMKVGD TASFNVTVNIPNCERRSRHIIHKPVGLGD
ALELLVSPECNDCQKEVEVNSSKCHHGNGSFQCGVCACHPGHMGPRCECGEDMLSTDSCKEAPDHPSCSG
RGDCYCGQCICHLSPYGNIGPYCQCDNFSCVRHKGLLCGDNDCDCGECVCRSGWTGEYCNCTTSTDSCV
SEDGVLCSGRGDCVCGKVCANPGASGPTCERCPTCGDPCNSKRSCIECHLSAAGQAREECVDKCKLAGATI
SEEEDFSKDGSVCSLQGENECLITFLITTDNEGKSIHHSISEKDCPKPPNIPMIMLGVS LAILLIGVVLLCIWKLL
VSFHDRKEVAKFEAERSKAKWQTGTNPLYRGSTSTFKNVTYKHREKQKVLDLSTDG*

Related Products

TGF-β:GARP:avβ6	
H_GARP Latent TGFB1 Reporter HEK-293 Cell Line	TGF-β Reporter 293 DDX35TM Cell Line
TGF-β Reporter HEK-293 Cell Line	H_GARP HEK-293 Cell Line
H_GARP Latent TGF-β1 CHO-K1 Cell Line	H_GARP Latent TGF-β1 HEK-293 Cell Line
H_ITGB6 CHO-K1 Cell Line	H_ITGB6 HEK-293 Cell Line
H_αvβ6 CT26 Cell Line	H_αvβ6 HEK-293 Cell Line
H_αvβ6 LLC1 Cell Line	H_αvβ6 MC38 Cell Line

Anti-GARP-TGF- β 1 hIgG4 Antibody(ARGX-115)	Anti-H_ITGB6 hIgG1 Reference Antibody (h2A2)
Anti-ITGB6 hIgG1 Antibody(SGN-B6A)	Anti-TGFB1 hIgG4 Antibody(SRK-181)
Anti- α v hIgG2 Antibody(Abituzumab)	Anti- α v β 6 hIgG1 Antibody(m15H3)
Anti-ITGB6-MMAE ADC(Dar4)[SGN-B6A]	
ADC Related Product	
Anti-DXD Mouse IgG1 Antibody (23E21C5)	Anti-DXD Mouse IgG1 Antibody (4A5A12)
Anti-Dxd Mouse IgG2a Antibody (17D6A4)	Anti-Eribulin Mouse IgG2a Antibody (10F8G4)
Anti-MMAE Mouse IgG1 Antibody (11C10E3)	Anti-MMAE Mouse IgG2a Antibody (17A1K11)
Anti-MMAE Mouse IgG2a Antibody (8F6A3)	Mouse anti Human IgG-MMAE(Dar4)
Human IgG1 Isotype-DXD (Dar8)	Human IgG1 Isotype-Eribulin (Dar4)
Human IgG1 Isotype-MMAE (Dar4)	
Recombinant DT3C Protein	

Limited Use License Agreement

Genomeditech (Shanghai) Co., Ltd grants to the Licensee all intellectual property rights, exclusive, non-transferable, and non-sublicensable rights of the Licensed Materials; Genomeditech (Shanghai) Co., Ltd will retain ownership of the Licensed Materials, cell line history packages, progeny, and the Licensed Materials including modified materials.

Between Genomeditech (Shanghai) Co., Ltd, and Licensee, Licensee is not permitted to modify cell lines in any way. The Licensee shall not share, distribute, sell, sublicense, or otherwise provide the Licensed Materials, or progenitors to third parties such as laboratories, departments, research institutions, hospitals, universities, or biotechnology companies for use other than for the purpose of outsourcing the Licensee's research.

Please refer to the Genomeditech Cell Line License Agreement for details.